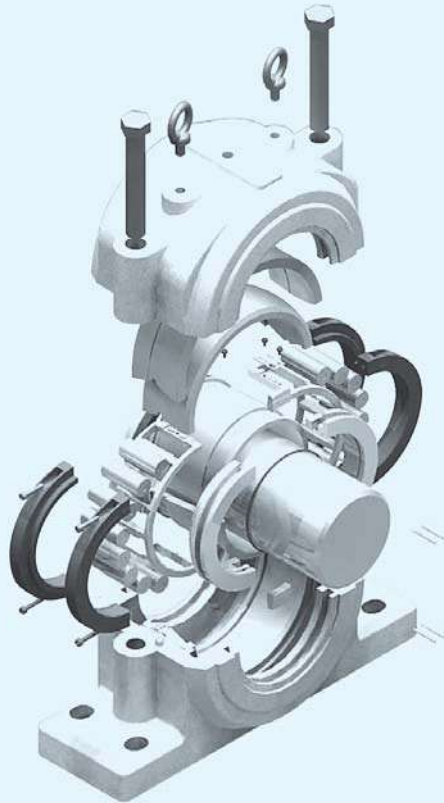


Split roller bearing with standard plummer block SPL series



Components

- Bearing
 - Outer cover
 - Outer ring
 - Inner ring
 - Clamping ring
 - Cylindrical Roller + Cage assembly
- Plummer block

Comfortable rectification from spherical bearing

Solid spherical bearings are normally used together with split SN, SD plummer blocks. Blocks are split, therefore easy assembly expected, nevertheless fitting and dismantling solid bearings are very difficult and take long time. (You have to remove all of the neighborhood parts.) **SPL series split bearing can be fitted in existing plummer block, in place of spherical bearing, without any modification.**

Note: For locating position BR type is applied, whereas BX type should be ordered for floating position.

Special features

- Every main component has two halves.
- Outer ring and inner ring has angled joints to ensure continuity of contact with rollers.
- Two halves of inner ring are fully fitted on shaft by two clamping rings.
- When fitting two halves of inner ring on shaft, there should be a gap at the joint in order to ensure full contact between the bore of inner ring and shaft. The gaps differ from the sizes, 0.35mm to 0.55mm.
- Cage is made of aluminum or brass, and its types differ from bearing size, for small size bore disk type cage is applied whereas window type cage is used for middle & big size bore. (SPL : bearing with disk type cage, SPLW : bearing with window type cage)
- For fitting in misalignment positions, the joint surfaces between outer cover and outer ring are rounded in order for self aligning.

Note: Rating life of split bearings is applied in calculation method of solid cylindrical roller bearing.

Radial internal clearance

Bore d mm		Radial internal clearance							
		CN μm		C3 μm		C4 μm		C5 μm	
Over	incl.	min.	max.	min.	max.	min.	max.	min.	max.
30	40	25	50	45	70	60	85	80	105
40	50	30	60	50	80	70	100	95	125
50	65	40	70	60	90	80	110	110	140
65	80	40	75	65	100	90	125	130	165
80	100	50	85	75	110	105	140	155	190
100	120	50	90	85	125	125	165	180	220
120	140	60	105	100	145	145	190	200	245
140	160	70	120	115	165	165	215	225	275
160	180	75	125	120	170	170	220	250	300
180	200	90	145	140	195	195	250	275	330
200	225	105	165	160	220	220	280	305	365
225	250	110	175	170	235	235	300	330	395
250	280	125	195	190	260	260	330	370	440
280	315	130	205	200	275	275	350	410	485
315	355	145	225	225	305	305	385	455	535
355	400	190	280	280	370	370	460	510	600
400	450	210	310	310	410	410	510	565	665
450	500	220	330	330	440	440	550	625	735

Shaft tolerances

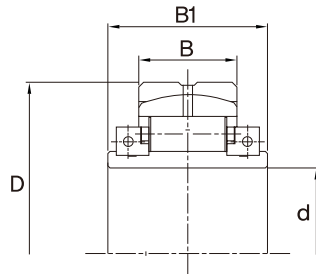
Shaft tolerances for Split roller bearings are recommended as follows;

1. h9 : When $d_n < 50,000$ and $P \leq 0.1C$
2. h8 : When $50,000 \leq d_n < 150,000$ and $P \leq 0.1C$
3. h7 : When $50,000 \leq d_n < 150,000$ and $P > 0.1C$
4. h6 : When $d_n \geq 150,000$
 - $d_n = n \cdot d_M$: Speed parameter
 - $d_M = (d+D)/2$: Mean bore diameter

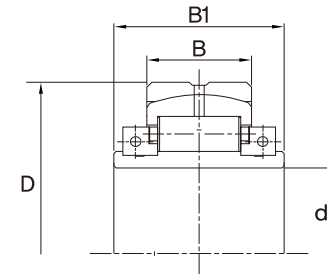
Roundness and cylindricity of shaft must conform to tolerance variation IT6.

Shaft diameter d(mm)		Deviation of bearing bore diameter Δ_{dmp}		h9	h8	h7	h6	IT6	
>	≤	High	Low	Deviations (upper limit, lower limit) Interference/clearance fit					Variation
30	50	0	-12	0 -62 +12 -62	0 -39 +12 -39	0 -25 +12 -25	0 -16 +12 -16	16	
50	80	0	-15	0 -74 +15 -74	0 -46 +15 -46	0 -30 +15 -30	0 -19 +15 -19	19	
80	120	0	-20	0 -87 +20 -87	0 -54 +20 -54	0 -35 +20 -35	0 -22 +20 -22	22	
120	180	0	-25	0 -100 +25 -100	0 -63 +25 -63	0 -40 +25 -40	0 -25 +25 -25	25	
180	250	0	-30	0 -115 +30 -115	0 -72 +30 -72	0 -46 +30 -46	0 -29 +30 -29	29	
250	315	0	-35	0 -130 +35 -130	0 -81 +35 -81	0 -52 +35 -52	0 -32 +35 -32	32	
315	400	0	-40	0 -140 +40 -140	0 -89 +40 -89	0 -57 +40 -57	0 -36 +40 -36	36	
400	500	0	-45	0 -155 +45 -155	0 -97 +45 -97	0 -63 +45 -63	0 -40 +45 -40	40	
500	630	0	-50	0 -175 +50 -175	0 -110 +50 -110	0 -70 +50 -70	0 -44 +50 -44	44	
630	800	0	-75	0 -200 +75 -200	0 -125 +75 -125	0 -80 +75 -70	0 -50 +75 -50	50	

SPL Series - Split roller bearing for Plummer Blocks



Floating Type - BX, KBX

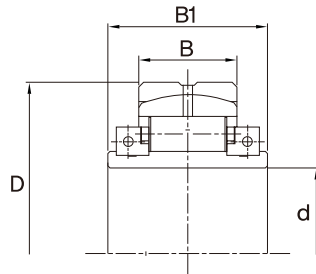


Locating Type - BR, KBR

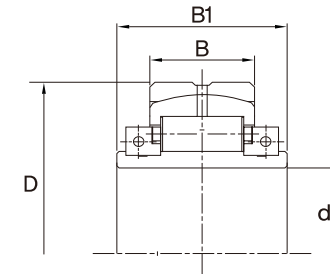
BEARING		D	B	B1	Load Ratings		RPM		Matching Plummer Block Housing
Shaft Dia.(d)	Designations				Dyn. C(kN)	Stat. C ₀ (kN)	Grease	Oil	
50	SPL 22210 B	90	33	45	107	163	5000	6300	SN210
	SPL 21310 B	110	37	50	131	165	3600	4800	SN310
	SPL 22310 B	110	50	75	162	218	3400	4300	SN310
	SPL 22211 KB	100	35	50	91	125	4500	5600	SN511
	SPL 21311 KB	120	39	70	143	170	3400	4300	SN611
SPL 22311 KB	120	53	80	179	227	3200	4000	SN611	
55	SPL 22211 B	100	35	50	118	175	4500	5600	SN211
	SPL 21311 B	120	39	70	148	189	3400	4300	SN311
	SPL 22311 B	120	53	80	185	251	3200	4000	SN311
	SPL 22212 KB	110	38	55	82	139	4300	5300	SN512
	SPL 21312 KB	130	41	75	161	193	3000	3800	SN612
SPL 22312 KB	130	56	85	201	257	2800	3600	SN612	
60	SPL 22212 B	110	38	55	141	211	4300	5300	SN212
	SPL 21312 B	130	41	75	167	214	3000	3800	SN312
	SPL 22312 B	130	56	85	209	286	2800	3600	SN312
	SPLW 22213 KB	120	41	70	134	189	3800	4800	SN513
	SPLW 21313 KB	140	43	75	200	252	2800	3600	SN613
	SPLW 22313 KB	140	58	90	222	285	2600	3400	SN613
	SPLW 22214 KB	125	41	70	184	255	3600	4500	SN514
	SPLW 21314 KB	150	45	85	210	250	2600	3400	SN614
SPLW 22314 KB	150	61	90	262	332	2200	3000	SN614	
65	SPL 22213 B	120	41	70	166	250	3800	4800	SN213
	SPL 21313 B	140	43	75	186	241	2800	3600	SN313
	SPL 22313 B	140	58	90	231	318	2600	3400	SN313
	SPLW 22215 KB	130	41	75	151	213	3400	4300	SN515
	SPLW 21315 KB	160	47	90	230	277	2400	3200	SN615
SPLW 22315 KB	160	65	100	291	374	2200	3000	SN615	
70	SPLW 22214 B	125	41	70	178	280	3600	4500	SN214
	SPLW 21314 B	150	45	85	207	269	2400	3200	SN314
	SPLW 22314 B	150	61	90	258	357	2200	3000	SN314

BEARING		D	B	B1	Load Ratings		RPM		Matching Plummer Block Housing
Shaft Dia.(d)	Designations				Dyn. C(kN)	Stat. C ₀ (kN)	Grease	Oil	
70	SPLW 22216 KB	140	43	80	152	220	3200	4000	SN516
	SPLW 21316 KB	170	49	90	251	305	2200	3000	SN616
	SPLW 22316 KB	170	68	100	319	414	2000	2800	SN616
75	SPLW 22215 B	130	41	75	164	253	3400	4300	SN215
	SPLW 21315 B	160	47	90	228	299	2400	3200	SN315
	SPLW 22315 B	160	65	100	289	404	2200	3000	SN315
	SPLW 22217 KB	150	46	85	220	307	2800	3600	SN517
SPLW 21317 KB	180	51	100	273	334	2000	2800	SN617	
SPLW 22317 KB	180	70	105	343	448	1900	2600	SN617	
80	SPLW 22216 B	140	43	80	202	321	3200	4000	SN216
	SPLW 21316 B	170	49	90	251	330	2200	3000	SN316
	SPLW 22316 B	170	68	100	318	449	2000	2800	SN316
	SPLW 22218 KB	160	50	90	247	347	2600	3400	SN518
	SPLW 23218 KB	160	62.4	100	293	434	1900	2600	SN518
SPLW 21318 KB	190	53	100	296	365	1900	2600	SN618	
SPLW 22318 KB	190	74	120	377	498	1800	2400	SN618	
85	SPLW 22217 B	150	46	85	197	297	2800	3600	SN217
	SPLW 21317 B	180	51	100	274	363	2000	2800	SN317
	SPLW 22317 B	180	70	105	344	488	1900	2600	SN317
	SPLW 22219 KB	170	53	95	268	376	2400	3200	SN519
	SPLW 21319 KB	200	55	90	319	396	1800	2400	SN619
SPLW 22319 KB	200	77	120	408	543	1800	2400	SN619	
90	SPLW 22218 B	160	50	90	269	434	2600	3400	SN218
	SPLW 23218 B	160	62.4	100	295	488	1900	2600	SN218
	SPLW 21318 B	190	53	100	298	398	1900	2600	SN318
	SPLW 22318 B	190	74	120	380	544	1800	2400	SN318
	SPLW 22220 KB	180	56	95	313	456	2200	3000	SN520
	SPLW 23220 KB	180	70.3	105	365	550	1700	2200	SN520
	SPLW 21320 KB	215	57	95	359	445	1700	2200	SN620
	SPLW 22320 KB	215	83	120	474	634	1700	2200	SN620

SPL Series - Split roller bearing for Plummer Blocks



Floating Type - BX, KBX

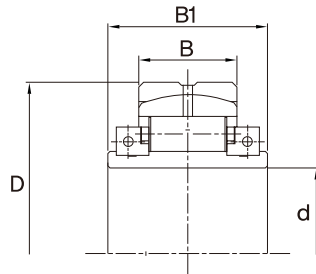


Locating Type - BR, KBR

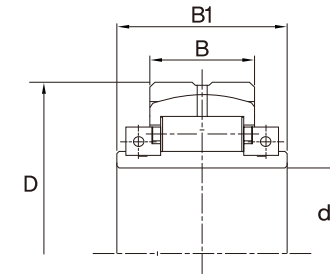
BEARING		D	B	B1	Load Ratings		RPM		Matching Plummer Block Housing
Shaft Dia.(d)	Designations				Dyn. C(kN)	Stat. C ₀ (kN)	Grease	Oil	
95	SPLW 22219 B	170	53	95	304	493	2400	3200	SN219
	SPLW 21319 B	200	55	90	323	434	1800	2400	SN319
	SPLW 22319 B	200	77	120	413	594	1800	2400	SN319
100	SPLW 23120 B	165	62	95	280	493	2000	2800	
	SPLW 22220 B	180	56	95	314	499	2200	3000	SN220
	SPLW 23220 B	180	70.3	100	346	564	1700	2200	SN220
	SPLW 21320 B	215	57	95	367	490	1700	2200	SN320
	SPLW 22320 B	215	83	120	484	698	1700	2200	SN320
	SPLW 23022 KB	170	55	95	284	478	2200	3000	
	SPLW 23122 KB	180	66	110	366	566	1900	2600	SN3122
	SPLW 22222 KB	200	63	110	405	603	2000	2800	SN522
	SPLW 23222 KB	200	79.8	115	493	781	1600	2000	SN522
	SPLW 21322 KB	240	60	110	422	524	1600	2000	SN622
	SPLW 22322 KB	240	90	145	569	769	1500	1900	SN622
	110	SPLW 23022 B	170	55	95	264	495	2200	3000
SPLW 23122 B		180	66	110	339	617	1900	2600	
SPLW 24122 B		180	79	115	362	672	1000	1400	
SPLW 22222 B		200	63	110	392	630	2000	2800	SN222
SPLW 23222 B		200	79.8	115	434	719	1600	2000	SN222
SPLW 21322 B		240	60	110	436	581	1600	2000	SN322
SPLW 22322 B		240	90	145	588	852	1500	1900	SN322
SPLW 23024 KB		180	56	95	304	536	2000	2800	SN3024
SPLW 23124 KB		200	72	105	394	634	1800	2400	SN3124
SPLW 22224 KB		215	68	115	453	688	1900	2600	SN524
SPLW 23224 KB		215	86	130	502	789	1500	1900	SN524
SPLW 22324 KB		260	96	145	644	882	1400	1800	SN624
115	SPLW 23026 KB	200	62	90	359	592	1900	2600	SN3026
	SPLW 23126 KB	210	74	125	427	685	1700	2200	SN3126
	SPLW 22226 KB	230	74	120	535	810	1800	2400	SN526
	SPLW 23226 KB	230	90	125	575	899	1300	1700	SN526
	SPLW 22326 KB	280	103	155	754	1034	1300	1700	SN626

BEARING		D	B	B1	Load Ratings		RPM		Matching Plummer Block Housing
Shaft Dia.(d)	Designations				Dyn. C(kN)	Stat. C ₀ (kN)	Grease	Oil	
120	SPLW 23024 B	180	56	95	280	546	2000	2800	
	SPLW 24024 B	180	70	115	333	683	1600	2000	
	SPLW 23124 B	200	72	105	395	703	1800	2400	
	SPLW 24124 B	200	90	130	436	798	900	1200	
	SPLW 22224 B	215	68	115	476	800	1900	2600	SN224
	SPLW 23224 B	215	86	130	526	911	1500	1900	SN224
125	SPLW 22324 B	260	96	145	669	980	1400	1800	SN326, SN624
	SPLW 23028 KB	210	63	105	385	601	1800	2400	SN3028
	SPLW 23128 KB	225	78	110	510	850	1600	2000	SN3128
130	SPLW 22228 KB	250	78	125	609	935	1700	2200	SN528
	SPLW 23228 KB	250	98	135	672	1064	1200	1600	SN528
	SPLW 22328 KB	300	112	165	857	1196	1100	1500	SN328, SN628
	SPLW 23026 B	200	62	90	342	652	1900	2600	
135	SPLW 24026 B	200	79	125	413	830	1500	1900	
	SPLW 23126 B	210	74	125	427	794	1700	2200	SN3126/130
	SPLW 24126 B	210	90	135	461	877	900	1200	
	SPLW 22226 B	230	74	120	494	827	1800	2400	SN226
	SPLW 23226 B	230	90	125	574	1006	1300	1700	SN226
	SPLW 22326 B	280	103	155	761	1129	1300	1700	
140	SPLW 23030 KB	225	66	120	426	741	1700	2200	SN3030
	SPLW 23130 KB	250	90	135	611	1008	1400	1800	SN3130
	SPLW 22230 KB	270	83	135	694	1075	1600	2000	SN530
	SPLW 23230 KB	270	106	160	776	1243	1100	1500	SN530
	SPLW 22330 KB	320	118	190	947	1336	1000	1400	SN330, SN630
140	SPLW 23028 B	210	63	105	362	717	1800	2400	
	SPLW 24028 B	210	79	125	432	899	1400	1800	
	SPLW 23128 B	225	78	110	473	890	1600	2000	
	SPLW 24128 B	225	95	145	512	985	850	1100	
	SPLW 22228 B	250	78	125	619	1064	1700	2200	SN228
	SPLW 23228 B	250	98	135	681	1203	1200	1600	SN228
SPLW 22328 B	300	112	165	870	1311	1100	1500	SN328	

SPL Series - Split roller bearing for Plummer Blocks



Floating Type - BX, KBX

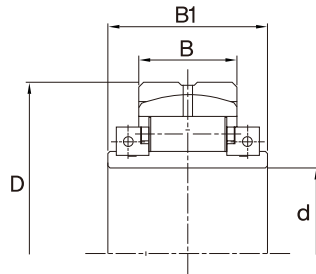


Locating Type - BR, KBR

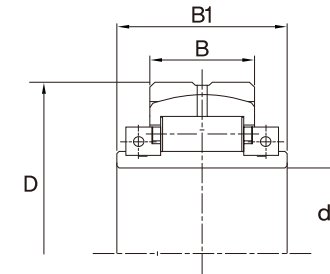
BEARING		D	B	B1	Load Ratings		RPM		Matching Plummer Block Housing
Shaft Dia.(d)	Designations				Dyn. C(kN)	Stat. C ₀ (kN)	Grease	Oil	
140	SPLW 23032 KB	240	70	105	501	869	1700	2200	SN3032
	SPLW 23132 KB	270	96	140	797	1345	1300	1700	SN3132
	SPLW 22232 KB	290	90	145	832	1292	1500	1900	SN532
	SPLW 23232 KB	290	114	155	923	1474	1000	1400	SN532
	SPLW 22332 KB	340	124	190	1071	1510	950	1300	SN632
150	SPLW 23030 B	225	66	120	404	805	1700	2200	
	SPLW 24030 B	225	85	140	492	1037	1300	1700	
	SPLW 23130 B	250	90	135	596	1098	1400	1800	
	SPLW 24130 B	250	110	150	647	1219	800	1000	
	SPLW 22230 B	270	83	135	714	1232	1600	2000	SN230
	SPLW 23230 B	270	106	170	796	1416	1100	1500	SN230
	SPLW 22330 B	320	118	190	967	1469	1000	1400	SN332
	SPLW 23034 KB	260	77	130	562	952	1600	2000	SD3034, SN3034
	SPLW 23134 KB	280	98	140	806	1375	1200	1600	SD3134, SN3134
	SPLW 22234 KB	310	96	150	939	1475	1300	1700	SD534
	SPLW 23234 KB	310	120	190	1030	1655	950	1300	SD3234TS
	SPLW 22334 KB	360	130	195	1170	1665	950	1300	SD634
	160	SPLW 23032 B	240	70	105	454	911	1700	2200
SPLW 24032 B		240	90	150	551	1171	1100	1500	
SPLW 23132 B		270	96	140	697	1284	1300	1700	
SPLW 24132 B		270	119	155	765	1447	700	900	
SPLW 22232 B		290	90	145	767	1301	1500	1900	SN232
SPLW 23232 B		290	114	155	849	1483	1000	1400	SN232
SPLW 22332 B		340	124	190	1068	1637	650	1300	
SPLW 23036 KB		280	84	140	709	1243	1400	1800	SD3036, SN3036
SPLW 23136 KB		300	106	145	861	1447	1100	1500	SD3136, SN3136
SPLW 22236 KB		320	96	150	1026	1672	1300	1700	SD536
SPLW 23236 KB		320	122	195	1039	1696	900	1200	SD3236TS
SPLW 22336 KB		380	136	210	1274	1830	900	1200	SD636
170		SPLW 23034 B	260	77	130	559	1122	1600	2000
	SPLW 24034 B	260	100	160	685	1457	1000	1400	

BEARING		D	B	B1	Load Ratings		RPM		Matching Plummer Block Housing
Shaft Dia.(d)	Designations				Dyn. C(kN)	Stat. C ₀ (kN)	Grease	Oil	
170	SPLW 23134 B	280	98	140	704	1319	1200	1600	
	SPLW 24134 B	280	119	160	760	1455	670	850	
	SPLW 22234 B	310	96	150	874	1492	1300	1700	SD234
	SPLW 23234 B	310	120	190	958	1679	950	1300	
	SPLW 22334 B	360	130	195	1174	1811	950	1300	SD334
	SPLW 23038 KB	290	85	140	706	1261	1300	1700	SD3038, SN3038
	SPLW 23138 KB	320	114	150	1003	1721	1000	1400	SD3138, SN3138
	SPLW 22238 KB	340	102	155	1053	1682	1200	1600	SD538
	SPLW 23238 KB	340	130	200	1165	1920	850	1100	SD3238TS
	SPLW 22338 KB	400	142	215	1382	2002	850	1100	SD638
180	SPLW 23936 B	250	62	115	415	923	1700	2200	
	SPLW 23036 B	280	84	140	637	1258	1400	1800	
	SPLW 24036 B	280	110	170	786	1647	950	1300	
	SPLW 23136 B	300	106	145	824	1552	1100	1500	
	SPLW 24136 B	300	128	180	886	1703	630	800	
	SPLW 22236 B	320	96	150	941	1668	1300	1700	
	SPLW 23236 B	320	122	195	1045	1908	900	1200	
	SPLW 22336 B	380	136	210	1284	1997	900	1200	
	SPLW 23040 KB	310	92	150	827	1475	1200	1600	SD3040, SD3340
	SPLW 23140 KB	340	122	160	1105	1893	950	1300	SD3140, SD3440
190	SPLW 22240 KB	360	108	160	1269	2101	1100	1500	SD540
	SPLW 23240 KB	360	138	220	1298	2158	850	1100	SD3240TS
	SPLW 22340 KB	420	148	225	1677	2546	850	1100	SD640
	SPLW 23938 B	260	62	120	428	978	1700	2200	
	SPLW 23038 B	290	85	140	675	1377	1300	1700	
	SPLW 24038 B	290	110	170	825	1782	950	1300	
	SPLW 23138 B	320	114	150	954	1804	1000	1400	
	SPLW 24138 B	320	138	185	1027	1984	600	750	
	SPLW 22238 B	340	102	155	1064	1896	1200	1600	SD238, SD538
	SPLW 23238 B	340	130	200	1184	2175	850	1100	
	SPLW 22338 B	400	142	215	1400	2191	850	1100	SD638

SPL Series - Split roller bearing for Plummer Blocks



Floating Type - BX, KBX

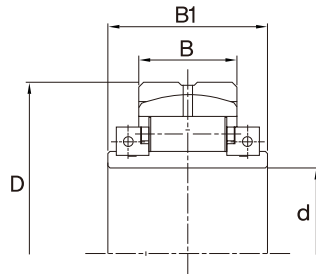


Locating Type - BR, KBR

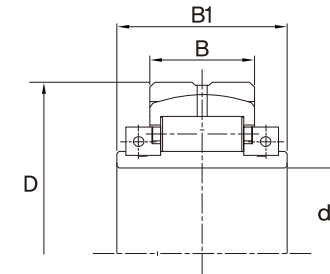
BEARING		D	B	B1	Load Ratings		RPM		Matching Plummer Block Housing
Shaft Dia.(d)	Designations				Dyn. C(kN)	Stat. C ₀ (kN)	Grease	Oil	
200	SPLW 23940 B	280	70	160	507	1123	1600	2000	
	SPLW 23040 B	310	92	150	757	1517	1200	1600	
	SPLW 24040 B	310	119	185	925	1962	900	1200	
	SPLW 23140 B	340	122	160	1134	1958	950	1300	
	SPLW 24140 B	340	150	200	1190	2317	560	700	
	SPLW 22240 B	360	108	160	1194	2138	1100	1500	
	SPLW 23240 B	360	138	220	1331	2459	850	1100	
	SPLW 22340 B	420	148	225	1679	2736	850	1100	
	SPLW 23044 KB	340	100	135	947	1738	1100	1500	SD3044, SD3344
	SPLW 23144 KB	370	130	180	1345	2403	900	1200	SD3144, SD3444
	SPLW 22244 KB	400	118	175	1405	2293	950	1300	SD544
	SPLW 23244 KB	400	154	240	1583	2676	750	950	SD3244TS
	SPLW 22344 KB	460	155	250	1893	2897	750	950	SD644
	220	SPLW 23944 B	300	70	125	542	1263	1500	1900
SPLW 23044 B		340	100	155	886	1800	1100	1500	
SPLW 24044 B		340	128	195	1073	2304	850	1100	
SPLW 23144 B		370	130	180	1231	2373	900	1200	
SPLW 24144 B		370	160	210	1343	2655	500	630	
SPLW 22244 B		400	118	175	1454	2622	950	1300	
SPLW 23244 B		400	154	240	1522	2772	750	950	
SPLW 22344 B		460	155	250	1910	3127	750	950	
SPLW 23048 KB		360	102	165	1020	1953	1000	1400	SD3048, SD3348
SPLW 23148 KB		400	138	185	1491	2694	850	1100	SD3148, SD3448
SPLW 22248 KB		440	130	210	1825	3106	900	1200	SD548
SPLW 23248 KB		440	170	235	1893	3250	670	850	SD3248TS
SPLW 22348 KB		500	165	260	2151	3331	670	850	SD648
240		SPLW 23948 B	320	70	130	555	1336	1300	1700
	SPLW 23048 B	360	102	165	939	1991	1000	1400	
	SPLW 24048 B	360	128	195	1121	2498	800	1000	
	SPLW 23148 B	400	138	180	1485	2694	850	1100	
	SPLW 24148 B	400	170	230	1505	3015	480	600	

BEARING		D	B	B1	Load Ratings		RPM		Matching Plummer Block Housing
Shaft Dia.(d)	Designations				Dyn. C(kN)	Stat. C ₀ (kN)	Grease	Oil	
240	SPLW 22248 B	440	130	210	1624	2883	900	1200	
	SPLW 23248 B	440	170	235	1844	3393	670	850	
	SPLW 22348 B	500	165	260	2185	3610	670	850	
	SPLW 23052 KB	400	114	175	1291	2479	900	1200	SD3052, SD3352
	SPLW 23152 KB	440	154	205	1815	3326	800	1000	SD3152, SD3452
	SPLW 22252 KB	480	140	245	2123	3649	850	1100	SD552
	SPLW 23252 KB	480	184	270	2211	3837	630	800	SD3252TS
	SPLW 22352 KB	540	175	270	2424	3795	630	800	SD652
260	SPLW 23952 B	360	85	140	777	1810	1100	1500	
	SPLW 23052 B	400	114	175	1155	2396	900	1200	
	SPLW 24052 B	400	150	235	1430	3153	700	900	
	SPLW 23152 B	440	154	200	1711	3370	800	1000	
	SPLW 24152 B	440	190	255	1870	3778	430	530	
	SPLW 22252 B	480	140	270	1908	3409	850	1100	
	SPLW 23252 B	480	184	270	2175	4033	630	800	
	SPLW 22352 B	540	175	270	2476	4126	630	800	
	SPLW 23056 KB	420	116	175	1295	2543	850	1100	SD3056, SD3356
	SPLW 23156 KB	460	156	200	1820	3416	750	950	SD3156, SD3456
	SPLW 22256 KB	500	140	245	2108	3684	800	1000	SD556
SPLW 23256 KB	500	186	285	2423	4405	600	750	SD3256TS	
SPLW 22356 KB	580	185	280	2711	4288	600	750	SD656	
280	SPLW 23956 B	380	85	145	799	1919	1000	1400	
	SPLW 23056 B	420	116	175	1225	2641	850	1100	
	SPLW 24056 B	420	150	235	1496	3415	670	850	
	SPLW 23156 B	460	156	200	1595	3124	750	950	
	SPLW 24156 B	460	190	265	1854	3804	400	500	
	SPLW 22256 B	500	140	245	2053	3818	800	1000	
	SPLW 23256 B	500	186	285	2360	4565	600	750	
	SPLW 22356 B	580	185	280	2784	4676	600	750	
	SPLW 23060 KB	460	128	190	1592	3140	800	1000	SD3060, SD3360
	SPLW 23160 KB	500	170	210	2157	4090	670	850	SD3160, SD3460

SPL Series - Split roller bearing for Plummer Blocks



Floating Type - BX, KBX

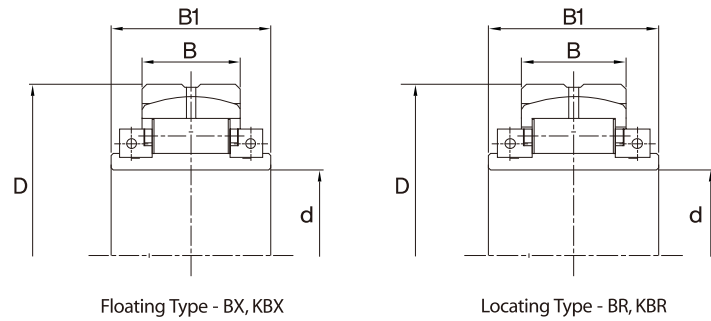


Locating Type - BR, KBR

BEARING		D	B	B1	Load Ratings		RPM		Matching Plummer Block Housing
Shaft Dia.(d)	Designations				Dyn. C(kN)	Stat. C ₀ (kN)	Grease	Oil	
280	SPLW 22260 KB	540	150	255	2414	4272	750	950	SD560
	SPLW 23260 KB	540	202	315	2816	5179	530	670	SD3260TS
300	SPLW 23960 B	420	100	150	1034	2407	950	1300	
	SPLW 23060 B	460	128	190	1457	3077	800	1000	
	SPLW 24060 B	460	170	255	1817	4087	600	750	
	SPLW 23160 B	500	170	210	2059	4146	670	850	
	SPLW 24160 B	500	210	280	2254	4656	360	450	
	SPLW 22260 B	540	150	255	2382	4454	750	950	
	SPLW 23260 B	540	202	315	2767	5399	530	670	
	SPLW 23064 KB	480	131	190	1724	3533	800	1000	SD3064, SD3364
	SPLW 23164 KB	540	186	225	2566	4863	630	800	SD3164, SD3464
	SPLW 22264 KB	580	160	265	2762	4905	670	850	SD564
SPLW 23264 KB	580	218	330	3237	6015	500	630	SD3264TS	
320	SPLW 23964 B	440	100	155	1067	2559	900	1200	
	SPLW 23064 B	480	131	190	1555	3409	800	1000	
	SPLW 24064 B	480	170	255	1904	4423	560	700	
	SPLW 23164 B	540	186	225	2456	4976	630	800	
	SPLW 24164 B	540	228	305	2671	5545	340	430	
	SPLW 22264 B	580	160	265	2525	4625	670	850	
	SPLW 23264 B	580	218	330	2960	5671	500	630	
	SPLW 23068 KB	520	143	195	1893	3801	700	900	SD3368
	SPLW 23168 KB	580	200	295	2720	5088	600	750	SD3168TS, SD3468
	SPLW 23268 KB	620	234	345	3373	6146	430	530	SD3268TS
340	SPLW 23968 B	460	100	160	1101	2711	900	1200	
	SPLW 23068 B	520	143	195	1904	4167	700	900	
	SPLW 24068 B	520	190	290	2374	5537	530	670	
	SPLW 23168 B	580	200	295	2862	5822	600	750	
	SPLW 24168 B	580	253	325	3190	6695	320	400	
	SPLW 23268 B	620	236	345	3412	6603	430	530	
	SPLW 23072 KB	540	144	220	2169	4625	670	850	SD3372
	SPLW 23172 KB	600	202	310	2951	5747	560	700	SD3172
	SPLW 23272 KB	650	242	350	3910	7413	400	500	SD3272TS

BEARING		D	B	B1	Load Ratings		RPM		Matching Plummer Block Housing
Shaft Dia.(d)	Designations				Dyn. C(kN)	Stat. C ₀ (kN)	Grease	Oil	
360	SPLW 23972 B	480	100	165	1133	2862	850	1100	
	SPLW 23072 B	540	144	220	2172	4681	670	850	
	SPLW 24072 B	540	190	290	3161	6346	500	630	
	SPLW 23172 B	600	202	310	2865	5913	560	700	
	SPLW 24172 B	600	253	335	3169	6732	300	380	
	SPLW 23272 B	650	242	350	3904	7810	400	500	
	SPLW 23076 KB	560	145	220	2169	4677	630	800	SD3376
	SPLW 23276 KB	680	250	360	4143	7927	380	480	SD3276TS
380	SPLW 23976 B	520	116	170	1468	3659	800	1000	
	SPLW 23076 B	560	145	220	2612	4796	630	800	
	SPLW 24076 B	560	190	290	2463	5983	480	600	
	SPLW 23176 B	620	204	315	3063	6548	400	500	
	SPLW 24176 B	620	253	340	3361	7380	190	260	
	SPLW 23276 B	680	250	360	4146	8364	380	480	
	SPLW 23080 KB	600	158	220	2443	5188	600	750	SD3080
	SPLW 23180 KB	650	210	325	3375	6873	380	480	SD3180
400	SPLW 23980 B	540	116	175	1456	3670	750	950	
	SPLW 23080 B	600	158	220	2286	5139	600	750	
	SPLW 24080 B	600	210	310	2852	6830	450	560	
	SPLW 23180 B	650	210	325	3268	7025	380	480	
	SPLW 24180 B	650	260	345	3583	7907	180	240	
	SPLW 23280 B	720	266	370	4668	9479	340	430	
	SPLW 23084 KB	620	160	260	2451	5276	450	560	SD3084
	SPLW 23184 KB	700	234	320	3851	7697	360	450	SD3184
410	SPLW 23088 KB	650	167	240	2641	5517	430	530	SD3088
	SPLW 23188 KB	720	236	340	4017	8013	340	430	SD3188TS
420	SPLW 23984 B	520	116	180	1263	3937	700	900	
	SPLW 23084 B	560	145	225	1784	4842	450	560	
	SPLW 24084 B	560	190	290	2202	6345	380	480	
	SPLW 23184 B	620	204	320	2867	6979	360	450	
	SPLW 24184 B	620	253	325	3147	7865	170	220	
SPLW 23284 B	680	250	360	3968	8903	320	400		

SPL Series - Split roller bearing for Plummer Blocks



BEARING		D	B	B1	Load Ratings		RPM		Matching Plummer Block Housing
Shaft Dia.(d)	Designations				Dyn. C(kN)	Stat. C ₀ (kN)	Grease	Oil	
430	SPLW 23092 KB	680	173	240	2827	5977	400	500	SD3092
	SPLW 23192 KB	760	250	355	4500	9022	320	400	
440	SPLW 23988 B	600	128	185	1825	4618	670	850	
	SPLW 23088 B	650	167	240	2632	6132	430	530	
	SPLW 24088 B	650	222	315	3284	8151	360	450	
	SPLW 23188 B	720	236	340	4051	8829	340	430	
	SPLW 24188 B	720	290	370	4415	9862	170	220	
	SPLW 23288 B	790	290	395	5495	11310	320	400	
450	SPLW 23096 KB	700	175	240	3018	6552	380	480	SD3096
	SPLW 23196 KB	790	258	360	4755	9610	300	380	
460	SPLW 23992 B	620	128	190	1883	4873	430	530	
	SPLW 23092 B	680	173	240	2844	6654	400	500	
	SPLW 24092 B	680	228	315	3525	8769	340	430	
	SPLW 23192 B	760	250	355	4286	9165	320	400	
	SPLW 24192 B	760	310	385	4704	10331	160	200	
	SPLW 23292 B	830	306	410	6086	12601	300	380	
470	SPLW 230/500 KB	720	177	260	3027	6650	380	480	
	SPLW 231/500 KB	830	274	375	5306	10792	280	360	
480	SPLW 23996 B	650	138	195	2056	5298	400	500	
	SPLW 23096 B	700	175	240	2850	6751	380	480	
	SPLW 24096 B	700	228	320	3501	8796	340	430	
	SPLW 23196 B	790	258	360	4545	9784	300	380	
	SPLW 24196 B	790	318	395	4965	10961	150	190	
	SPLW 23296 B	870	320	420	6166	12488	260	340	
500	SPLW 239/500 B	670	138	200	2123	5590	400	500	
	SPLW 230/500 B	720	177	260	2998	7304	380	480	
	SPLW 240/500 B	720	228	320	3651	9409	320	400	
	SPLW 231/500 B	830	274	375	5107	11040	280	360	
	SPLW 241/500 B	830	335	405	5543	12267	140	180	
	SPLW 232/500 B	920	346	445	7113	14489	240	320	
	SPLW 230/530 KB	780	195	300	3712	8172	340	430	